

REV	DESCRIPTION	DRN	DATE
A	REF - REF - DRAFT ISSUE	DP	04/11/2022
B	REF - DRAFT ISSUE FOR COORDINATION	DP	11/11/2022
C	ISSUED FOR COORDINATION	DP	18/11/2022
D	ISSUED FOR COORDINATION	DP	01/12/2022
E	REF ISSUE	DP	02/12/2022
F	50 REPORT ISSUE	DP	16/12/2022
G	ISSUED FOR COORDINATION	DP	02/03/2023
H	REF ISSUE	DP	10/02/2023
J	DRAFT ISSUE FOR REVIEW/COORDINATION	DP	24/02/2023
K	ISSUED FOR COORDINATION	DP	17/03/2023
L	ISSUED FOR COORDINATION	DP	31/03/2023
M	ISSUED FOR COORDINATION	DP	03/04/2023
N	ISSUED FOR COORDINATION	DP	14/04/2023
P	DRAFT DO ISSUED FOR COORDINATION	DP	21/04/2023
Q	ISSUE FOR TENDER	DP	05/05/2023
R	TENDER ADDENDUM	DP	26/05/2023
S	REF ISSUE	DP	06/07/2023
T	IFC REVIEW	DP	08/04/2024
U	ISSUE FOR CC	DP	11/04/2024
V	ISSUE FOR COORDINATION	DP	21/05/2024
W	ISSUE FOR COORDINATION	DP	31/05/2024
X	ISSUE FOR CC2 REVIEW	DP	05/07/2024

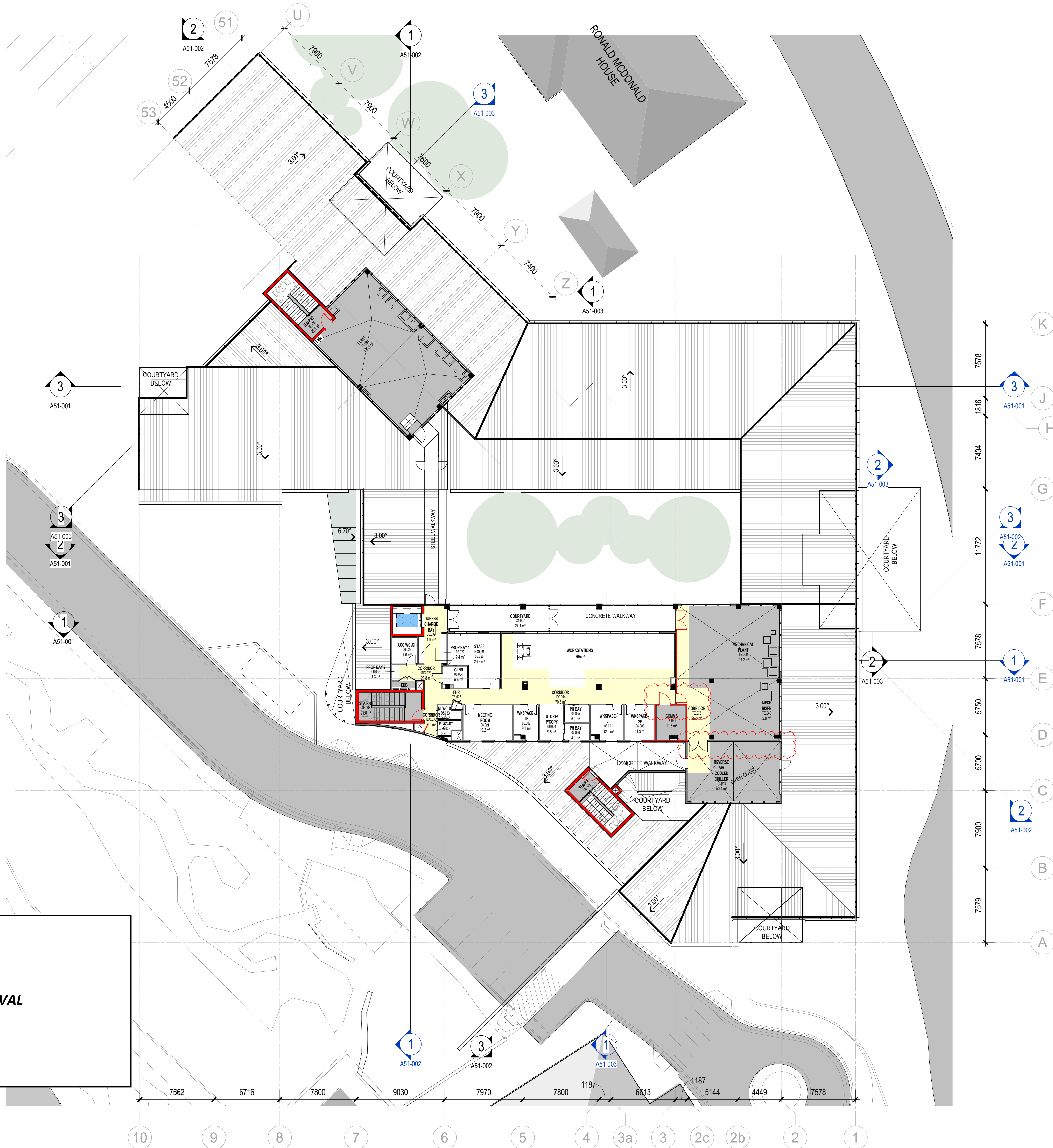
Signed by:

DETERMINED – APPROVAL

REF Approval No: 09/2023/C

Date: 16/9/2024

Signed by:



LEGEND

2HR FIRE RATED WALLS

2HR FIRE RATED DOORS

CLD EXTERNAL CLADDING FOR DETAILS REFER TO ELEVATIONS ON A50 SERIES

PUBLIC

STAFF

GENERAL NOTES:
DRAWING TO READ IN CONJUNCTION WITH
CONSULTANTS DOCUMENTATION

FOR PARTITION TYPES REFER TO PARTITION DETAILS
A24 SERIES

FOR EXTERNAL CLADDING REFER TO ELEVATION
LEGEND A50 SERIES

CIRCULATION

T & E

REV	DESCRIPTION	DRN	DATE
A	REF - DRAFT ISSUE	DP	04/11/2022
B	REF - DRAFT ISSUE 2	DP	11/11/2022
C	ISSUED FOR COORDINATION	DP	18/11/2022
D	ISSUED FOR COORDINATION/PRICING	DP	01/12/2022
E	REF ISSUE	DP	02/12/2022
F	SD REPORT ISSUE	DP	16/12/2022
G	ISSUED FOR COORDINATION	DP	02/02/2023
H	REF ISSUE	DP	10/02/2023
I	DRAFT ISSUE FOR REVIEW/COORDINATION	DP	24/02/2023
J	ISSUED FOR COORDINATION	DP	17/03/2023
K	ISSUED FOR COORDINATION	DP	31/03/2023
L	ISSUED FOR COORDINATION	DP	03/04/2023
M	ISSUED FOR COORDINATION	DP	14/04/2023
N	ISSUED FOR COORDINATION	DP	21/04/2023
O	ISSUE FOR TENDER	DP	05/05/2023
P	DRAFT DO ISSUED FOR COORDINATION	DP	06/07/2023
Q	REF ISSUE	DP	08/04/2024
R	ISSUE FOR CC	DP	11/04/2024
S	ISSUE FOR COORDINATION	DP	21/05/2024
T	ISSUE FOR CC2 REVIEW	DP	05/07/2024

COPYRIGHT

ALL RIGHTS RESERVED. THIS WORK IS COPYRIGHT AND CANNOT BE REPRODUCED OR COPIED IN ANY FORM OR BY ANY MEANS (GRAPHIC, ELECTRONIC OR MECHANICAL INCLUDING PHOTOCOPYING) WITHOUT THE WRITTEN PERMISSION OF THE PRINCIPAL UNDER THE TERMS OF THE CONTRACT. ANY LICENCE, EXPRESS OR IMPLIED, TO USE THE DOCUMENT FOR ANY PURPOSE WHATSOEVER IS RESTRICTED TO THE TERMS OF THE AGREEMENT OR IMPLIED AGREEMENT WITH THE PRINCIPAL UNDER THE TERMS OF THE CONTRACT.

DIMENSIONS

USE FIGURED DIMENSIONS. DO NOT SCALE. CONTRACTORS MUST VERIFY ALL DIMENSIONS ON THE SITE BEFORE COMMENCING ANY WORK OR MAKING ANY SHOP DRAWING WHICH MUST BE SUBMITTED AND REVIEWED BEFORE MANUFACTURE.

FIXTURES, FITTINGS & EQUIPMENT SPECIFICATIONS

SUBSTITUTE FF&E EQUIPMENT SPECIFICATIONS
THE FIT OUT DESIGN AND DOCUMENTATION HAS BEEN COMPLETED ON THE BASIS OF FF&E AND EQUIPMENT ADVISED TO THIS OFFICE AT THE TIME OF BRIEFING THE DESIGN. THE DESIGN PROVISIONS FOR FF&E AND EQUIPMENT INCORPORATES SPATIAL ALLOCATIONS, SERVICING, LOADING AND ACCESS CLEARANCES AND WHERE APPROPRIATE SERVICES REQUIREMENTS, HAVING DUE REGARD FOR SURROUNDING FIXTURES AND FITTINGS. IT SHOULD BE NOTED THAT SUBSTITUTE FF&E OR EQUIPMENT WITH ALTERNATE SPECIFICATIONS SHOULD NOT BE PROCURED PRIOR TO VALIDATING THOSE SPECIFICATIONS AGAINST THE ITEM CONTROL, SCHEDULE AND DESIGN PROVISIONS IN THE MODEL. THIS OFFICE ACCEPTS NO RESPONSIBILITY FOR THE PROCUREMENT OF SUBSTITUTE FF&E AND EQUIPMENT WHICH HAS NOT BEEN REVIEWED AND VALIDATED AGAINST THE ORIGINAL DESIGN PROVISIONS.

SERVICE POINTS DISCLAIMER

THE SERVICE POINTS IDENTIFIED ON THESE DRAWINGS HAVE BEEN OVERLAYED FROM THE BUILDING SERVICES ENGINEERING MODEL, AND ARE PROVIDED FOR INFORMATION AND SET-OUT PURPOSES ONLY. WE HAVE BEEN ADVISED BY THE SERVICES ENGINEERS THAT THE POINTS REPRESENTED ON THESE DRAWINGS ARE CORRECT AT THE TIME OF PUBLICATION. THIS OFFICE DOES NOT WARRANT THE ACCURACY OF THIS DATA. REFER TO THE BUILDING SERVICES ENGINEERING DOCUMENTATION FOR THE INSTALLATION OF THE SERVICES POINTS, AND THE INTERFACE BETWEEN THE SERVICES POINTS AND THE RESPECTIVE ENGINEERING SYSTEMS.

ISSUED FOR CERTIFICATION

ARCHITECTS



ABN: 21 134 476 065
PELACO COMPLEX, BUILDING 3, LEVEL 2
21-31 GOODWOOD ST, RICHMOND VIC 3121, AUSTRALIA
PH: (03) 9885 2333
THIS ARCHITECTURAL DESIGN IS THE COPYRIGHT OF
SILVER THOMAS HANLEY (AUS) PTY LTD ABN 21 134 476 065
AND SHALL NOT BE REPRODUCED WITHOUT THEIR WRITTEN PERMISSION

CLIENT

Hunter New England Local Health District



PROJECT

TAMWORTH MENTAL HEALTH UNIT

Dean Street Tamworth NSW

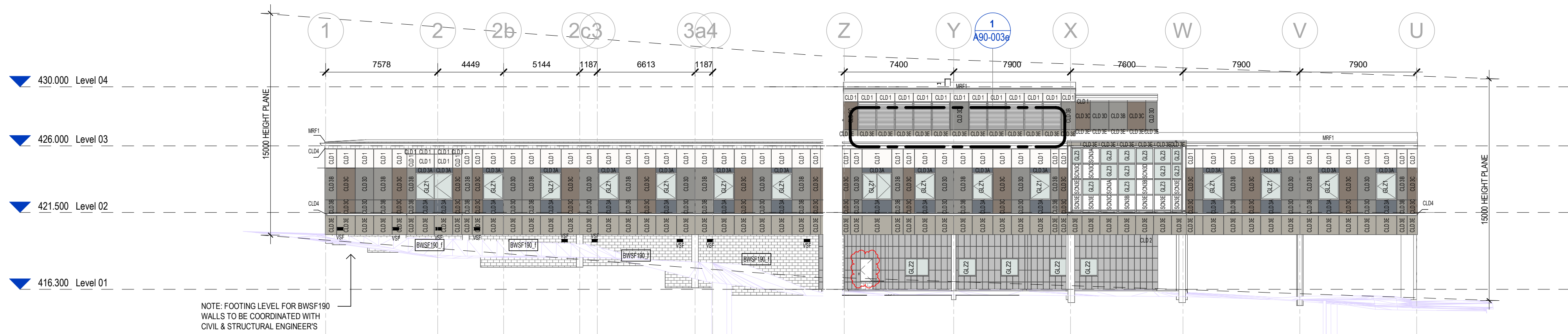
DRAWING TITLE

OVERALL FLOOR PLAN - LEVEL 03

SCALE 1:200@A1 DATE 09/15/22 DRAWN BY AB CHECKED DP

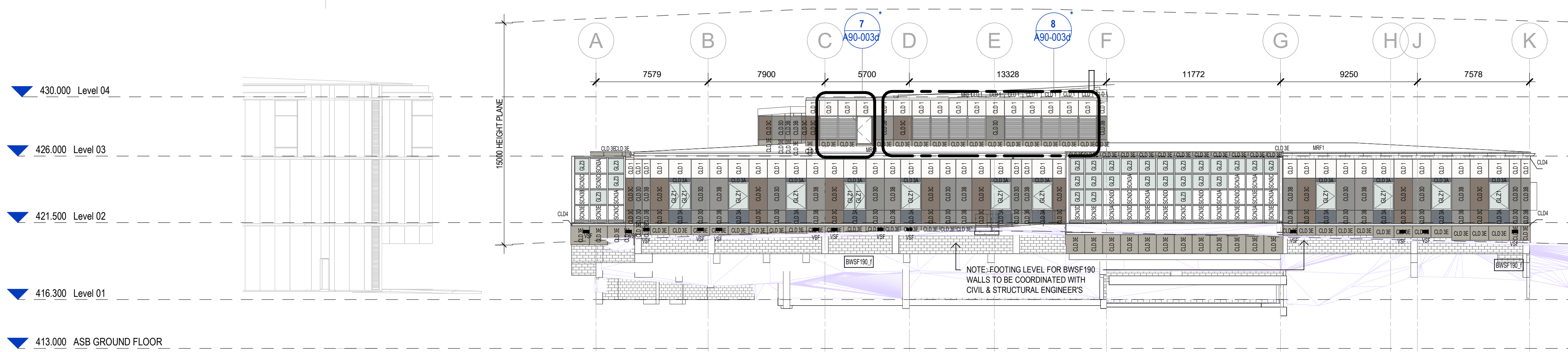
PROJECT No DRAWING No REVISION

10500.1 A20-300

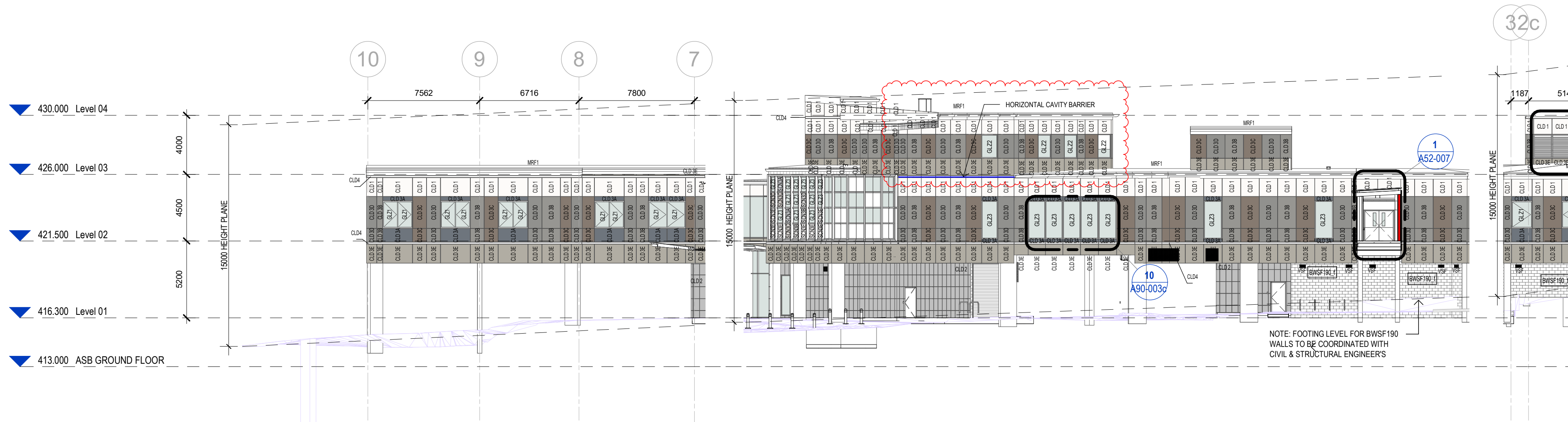


1 NORTH ELEVATION - 01
SCALE: 1 : 200

2 NORTH ELEVATION - 02
SCALE: 1 : 200

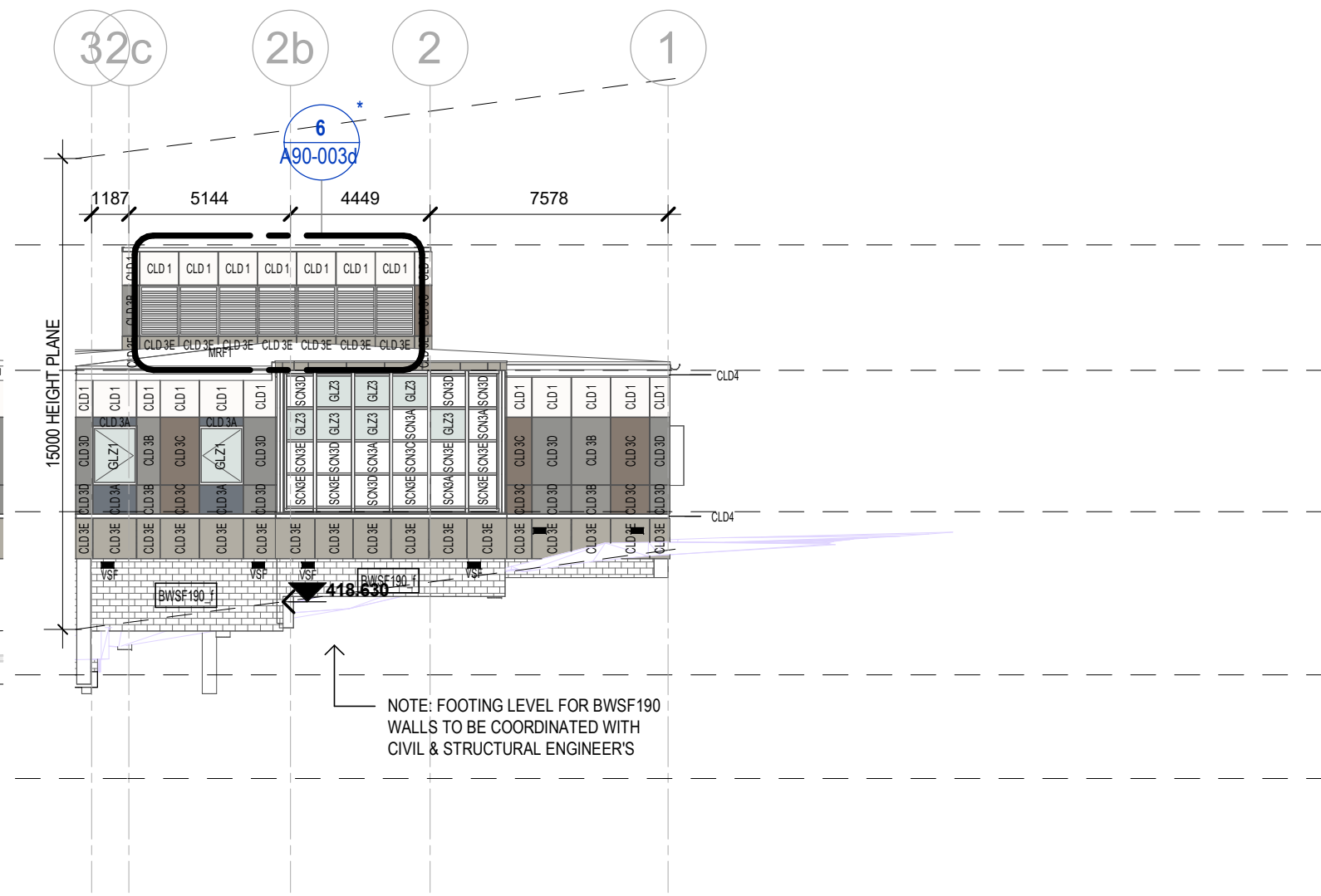


3 EAST ELEVATION - 01
SCALE: 1 : 200



4 SOUTH ELEVATION - 01
SCALE: 1 : 200

5 SOUTH ELEVATION - 02
SCALE: 1 : 200



6 SOUTH ELEVATION - 03
SCALE: 1 : 200

MATERIALS LEGEND

MTFL	METAL FLASHING, TRIMS AND CAPPING TO WALL CLADDING, ROOFS, FASCIAS TO MATCH ROOF FINISH - COLOUR SHALE GREY	CLD3c	PROCLAD SOLID - COLOUR IN 'MEDIUM BRONZE METALLIC' (TO BE CUT ACCORDING TO FACADE) 1250mm x TBAmm TRIMMED AND SEALED-CORNERS FOLDED	CLDEX1	PROCLAD SOLID - COLOUR IN 'SOUTH AFRICAN TEAK' LINK BRIDGE TO MATCH EXISTING FACADE PANEL (TO BE CUT ACCORDING TO FACADE) 1250mm x TBAmm TRIMMED AND SEALED-CORNERS FOLDED	GLZ1	DOUBLE-GLAZED UNIT (8mm CLEAR HEAT STRENGTHENED +12mm AIR SPACE + 11.52mm CLEAR LAMINATED HEAT STRENGTHENED) COUPLED WITH A JOCKEY SASH JOCKEY SASH FRAME TO BE HEAVY DUTY GAUGE/SECTION TO TAKE GLASS THICKNESS FOR CONSUMER AREAS HINGED WINDOW COMPRISING OF 12mm CLEAR TOUGHENED LAMINATED VIRIDIAN ASSAULT GUARD ULTRA GLAZING. BOTTOM HALF OF SURFACE 4 OF DOUBLE-GLAZED UNITS TO ALL BEDROOMS TO ENCORPORATE A CERAMIC FRIT/ FILM
CLD1	PROCLAD SOLID - COLOUR IN 'PURE WHITE' (TO BE CUT ACCORDING TO FACADE) 1250mm x TBAmm TRIMMED AND SEALED-CORNERS FOLDED	CLD3d	PROCLAD SOLID - COLOUR IN 'BRONZE METALLIC' (TO BE CUT ACCORDING TO FACADE) 1250mm x TBAmm TRIMMED AND SEALED-CORNERS FOLDED	CLD4	3mm SOLID ALUMINIUM TRIM TO MATCH EXISTING ASB REFER TO WALL SECTIONS FOR SIZE	GLZ2	DOUBLE-GLAZED UNIT (8mm CLEAR HEAT STRENGTHENED +12mm AIR SPACE + 11.52mm CLEAR LAMINATED HEAT STRENGTHENED)
CLD2	FRONTEK - ST182 (STONE TEXTURED) EXTRUDED PORCELAIN CLADDING TILES 405mm x 800mm	CLD3e	PROCLAD SOLID - COLOUR IN 'DUNE' (TO BE CUT ACCORDING TO FACADE) 1250mm x TBAmm TRIMMED AND SEALED-CORNERS FOLDED	BWSF190	PEARL GREY ARCHITEC SPLIT AUSTRAL MASONRY SPLIT FACE CONCRETE BLOCK - REFER STRUCTURAL ENGINEER'S DOCUMENTS FOR REINFORCEMENT	GLZ3	VIRIDIAN ASSAULT GUARD ULTRA COMPRISING OF 12mm CLEAR LAMINATED HEAT STRENGTHENED GLAZING.
CLD3a	PROCLAD SOLID - COLOUR IN 'GREY METALLIC' (TO BE CUT ACCORDING TO FACADE) 1250mm x TBAmm TRIMMED AND SEALED-CORNERS FOLDED	SCNXX	SCNXX (XX- RELATES TO CLD MATCH) LOCKER GROUP APOLLO 300 - ASSORTED COLOURS (TO MATCH PROCLAD COLOUR PALETTE) FINISH PERFORATED POWDERCOATED METAL PANEL LOCATION: COURTYARDS AND LEVEL 02 MAIN ENTRY	MRF1	METAL DECK ROOF IN LYSAGHT KLIPLOCK 700 HIGH STRENGTH PROFILE - COLOUR IN SHALE GREY RAINWATER GOODS FINISH IN COLORBOND BASALT - 300mm HALF ROUND GUTTER AND 150mm DIA DOWN PIPES	GLZ4	DOUBLE-GLAZED UNIT COMPRISING OF TINTED 8mm CLEAR HEAT STRENGTHENED +12mm AIR SPACE + 12mm VIRIDIAN ASSAULT GUARD ULTRA LAMINATED HEAT STRENGTHENED GLAZING. BOTTOM HALF OF SURFACE 3 OF GLAZING UNIT TO ENCORPORATE A CERAMIC FRIT/ FILM
CLD3b	PROCLAD SOLID - COLOUR IN 'CHAMPAGNE METALLIC' (TO BE CUT ACCORDING TO FACADE) 1250mm x TBAmm TRIMMED AND SEALED-CORNERS FOLDED					GLZ5	13.52mm CLEAR LAMINATED GLASS H/S TO AS 1288
						GLZ6	COLOURBACK GLASS

NOTE:
BEDROOM AND SOME OTHER WINDOWS REQUIRE VISIBLE GLASS IN THE HD JOCKEY SASH TO BE 10% ROOM AREA.
1. EQUATES FOR 15M2 BEDROOM TO 1.5M2 OF JOCKEY SASH (JS) GLASS, WITH JS NOM 100MM FRAME + PRIMARY WINDOW FRAME IS APPROX 2.15M2 WINDOW INCLUDING FRAME.
2. EQUATES FOR 19M2 SPECIAL BEDROOM TO 1.9M2 VISION GLAZING AND 2.85M2 WINDOW INCLUDING FRAME.
3. OTHER ROOMS - SIZES TO BE CONFIRMED

GLZ1	DOUBLE-GLAZED UNIT (8mm CLEAR HEAT STRENGTHENED +12mm AIR SPACE + 11.52mm CLEAR LAMINATED HEAT STRENGTHENED) COUPLED WITH A JOCKEY SASH JOCKEY SASH FRAME TO BE HEAVY DUTY GAUGE/SECTION TO TAKE GLASS THICKNESS FOR CONSUMER AREAS HINGED WINDOW COMPRISING OF 12mm CLEAR TOUGHENED LAMINATED VIRIDIAN ASSAULT GUARD ULTRA GLAZING. BOTTOM HALF OF SURFACE 4 OF DOUBLE-GLAZED UNITS TO ALL BEDROOMS TO ENCORPORATE A CERAMIC FRIT/ FILM
GLZ2	DOUBLE-GLAZED UNIT (8mm CLEAR HEAT STRENGTHENED +12mm AIR SPACE + 11.52mm CLEAR LAMINATED HEAT STRENGTHENED)
GLZ3	VIRIDIAN ASSAULT GUARD ULTRA COMPRISING OF 12mm CLEAR LAMINATED HEAT STRENGTHENED GLAZING.
GLZ4	DOUBLE-GLAZED UNIT COMPRISING OF TINTED 8mm CLEAR HEAT STRENGTHENED +12mm AIR SPACE + 12mm VIRIDIAN ASSAULT GUARD ULTRA LAMINATED HEAT STRENGTHENED GLAZING. BOTTOM HALF OF SURFACE 3 OF GLAZING UNIT TO ENCORPORATE A CERAMIC FRIT/ FILM
GLZ5	13.52mm CLEAR LAMINATED GLASS H/S TO AS 1288
GLZ6	COLOURBACK GLASS

NOTE: Glass external and internal reflectance shall be minimised where possible, with external reflectance not exceeding 15%. Bedroom glazing with ceramic frit will comply with the requirements of ASTM C1379, ASTM C1048 and ASTM D2244, and shall not fade, chalk or show any other form of deterioration for the duration of the design life. All glazing to assume Low-E coating and have a thermally broken frame as per facade engineer and JV3 Sustainability requirements and specification.

REV	DESCRIPTION	DRN	DATE
A	REF - DRAFT ISSUE	DP	04/11/2022
B	REF - DRAFT ISSUE 2	DP	11/11/2022
C	ISSUED FOR COORDINATION	DP	18/11/2022
D	ISSUED FOR COORDINATION/PRICING	DP	01/12/2022
E	REF ISSUE	DP	02/12/2022
F	SD REPORT ISSUE	DP	16/12/2022
G	REF ISSUE	DP	20/12/2022
H	REF ISSUE	DP	10/02/2023
J	DRAFT ISSUE FOR REVIEW/COORDINATION	DP	24/02/2023
K	DRAFT DOI ISSUED FOR COORDINATION	DP	21/04/2023
L	ISSUE FOR TENDER	DP	05/05/2023
M	TENDER ADDENDUM	DP	26/06/2023
N	REF ISSUE	DP	06/07/2023
P	ENDORSED COMMENTS ACTIONED	DP	16/02/2024
Q	ISSUE FOR CC	DP	11/04/2024
R	ISSUE FOR CC2 REVIEW	DP	29/04/2024
S	ISSUE FOR CC2 REVIEW	DP	05/07/2024
T	ISSUE FOR CC2 REVIEW/COORDINATION	DP	12/07/2024

COPYRIGHT
ALL RIGHTS RESERVED. THIS WORK IS COPYRIGHT AND CANNOT BE REPRODUCED OR COPIED IN ANY FORM OR BY ANY MEANS (GRAPHIC, ELECTRONIC OR MECHANICAL INCLUDING PHOTOCOPYING) WITHOUT THE WRITTEN PERMISSION OF THE PRINCIPAL UNDER THE TERMS OF THE CONTRACT. ANY LICENCE EXPRESS OR IMPLIED TO USE THE DOCUMENT FOR ANY PURPOSE WHATSOEVER IS RESTRICTED TO THE TERMS OF THE AGREEMENT OR IMPLIED AGREEMENT WITH THE PRINCIPAL UNDER THE TERMS OF THE CONTRACT.

DIMENSIONS
USE FIGURED DIMENSIONS, DO NOT SCALE. CONTRACTORS MUST VERIFY ALL DIMENSIONS ON THE SITE BEFORE COMMENCING ANY WORK OR MAKING ANY SHOP DRAWING WHICH MUST BE SUBMITTED AND REVIEWED BEFORE MANUFACTURE.

FIXTURES, FITTINGS & EQUIPMENT SPECIFICATIONS
SUBSTITUTE FF&E EQUIPMENT SPECIFICATIONS
THE FIT-OUT DESIGN AND DOCUMENTATION HAS BEEN COMPLETED ON THE BASIS OF FF&E AND EQUIPMENT ADVISED TO THIS OFFICE AT THE TIME OF BRIEFING THE DESIGN. THE DESIGN PROVISIONS FOR FF&E AND EQUIPMENT INCORPORATES SPATIAL ALLOCATIONS, SERVICING, LOADING AND ACCESS CLEARANCES AND WHERE APPROPRIATE SERVICES REQUIREMENTS, HAVING DUE REGARD FOR SURROUNDING FIXTURES AND FITTINGS. IT SHOULD BE NOTED THAT SUBSTITUTE FF&E OR EQUIPMENT WITH ALTERNATE SPECIFICATIONS SHOULD NOT BE PROCURED PRIOR TO VALIDATING THOSE SPECIFICATIONS AGAINST THE ITEM CONTROL, SCHEDULE AND DESIGN PROVISIONS IN THE MODEL. THIS OFFICE ACCEPTS NO RESPONSIBILITY FOR THE PROCUREMENT OF SUBSTITUTE FF&E AND EQUIPMENT WHICH HAS NOT BEEN REVIEWED AND VALIDATED AGAINST THE ORIGINAL DESIGN PROVISIONS.

SERVICE POINTS DISCLAIMER
THE SERVICE POINTS IDENTIFIED ON THESE DRAWINGS HAVE BEEN OVERLAYED FROM THE BUILDING SERVICES ENGINEERING MODEL. AND ARE PROVIDED FOR INFORMATION AND SET-OUT PURPOSES ONLY. WE HAVE BEEN ADVISED BY THE SERVICES ENGINEERS THAT THE POINTS REPRESENTED ON THESE DRAWINGS ARE CORRECT AT THE TIME OF PUBLICATION. THIS OFFICE DOES NOT WARRANT THE ACCURACY OF THIS DATA. REFER TO THE BUILDING SERVICES ENGINEERING DOCUMENTATION FOR THE INSTALLATION OF THE SERVICES POINTS, AND THE INTERFACE BETWEEN THE SERVICES POINTS AND THE RESPECTIVE ENGINEERING SYSTEMS.

ISSUED FOR CERTIFICATION

ARCHITECTS

ABN: 21 134 476 065
PELAO COMPLEX, BUILDING 3, LEVEL 2
21-31 GOODWOOD ST, RICHMOND VIC 3121, AUSTRALIA
PH: (03) 9885 2333
THIS ARCHITECTURAL DESIGN IS THE COPYRIGHT OF
SILVER THOMAS HANLEY (AUS) PTY LTD ABN 21 134 476 065
AND SHALL NOT BE REPRODUCED WITHOUT THEIR WRITTEN PERMISSION
CLIENT

Hunter New England Local Health District

PROJECT

TAMWORTH MENTAL HEALTH UNIT

Dean Street Tamworth NSW

DRAWING TITLE

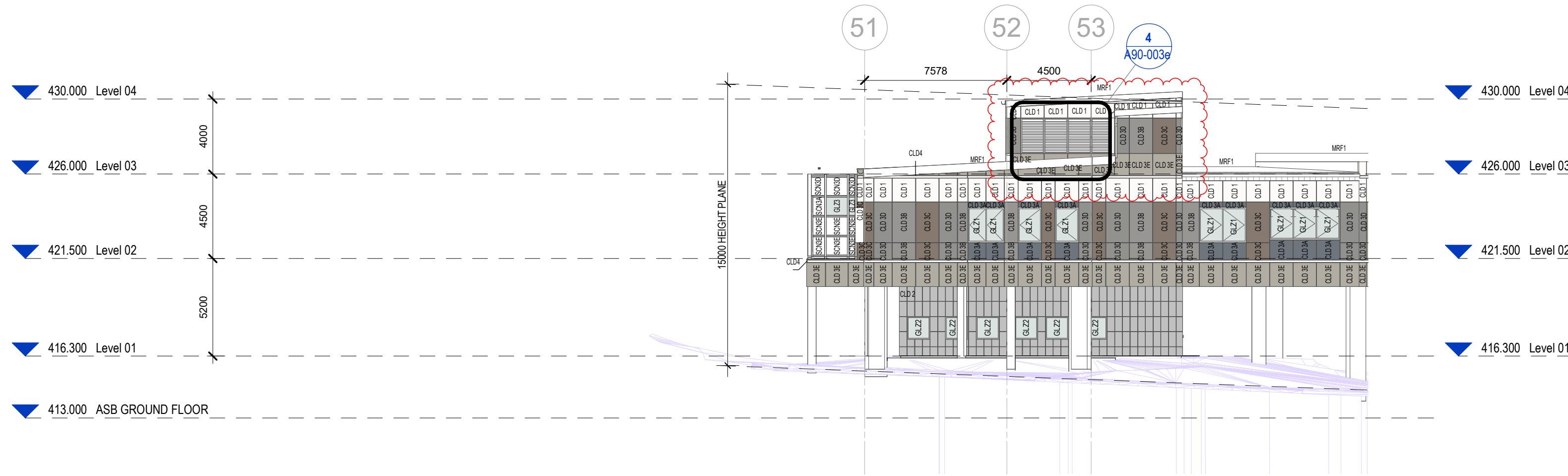
BUILDING ELEVATIONS

SCALE DATE DRAWN BY CHECKED
As indicated@A1 12/18/21 AB DP

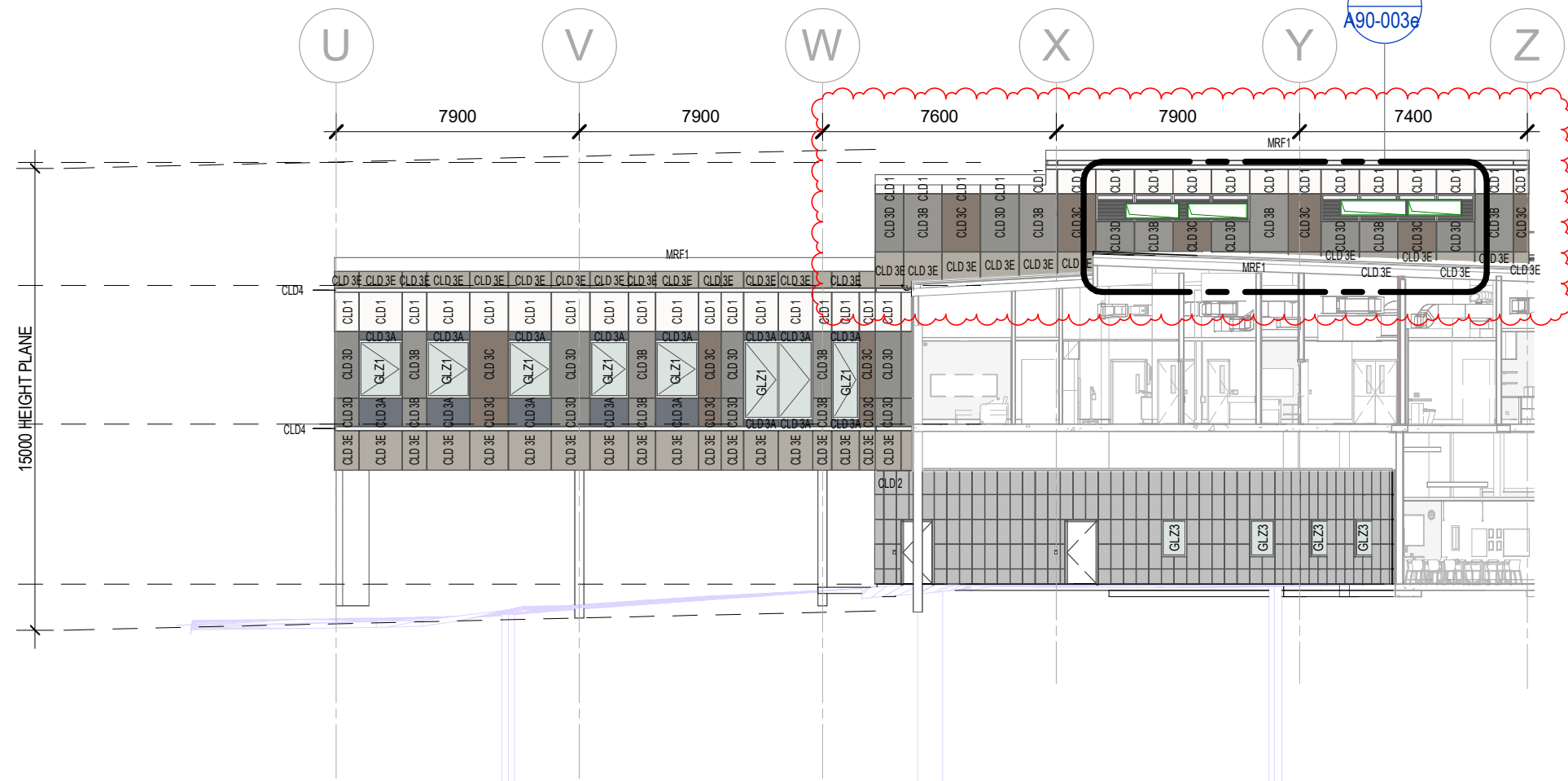
PROJECT No DRAWING No REVISION

10500.1 A50-001

T



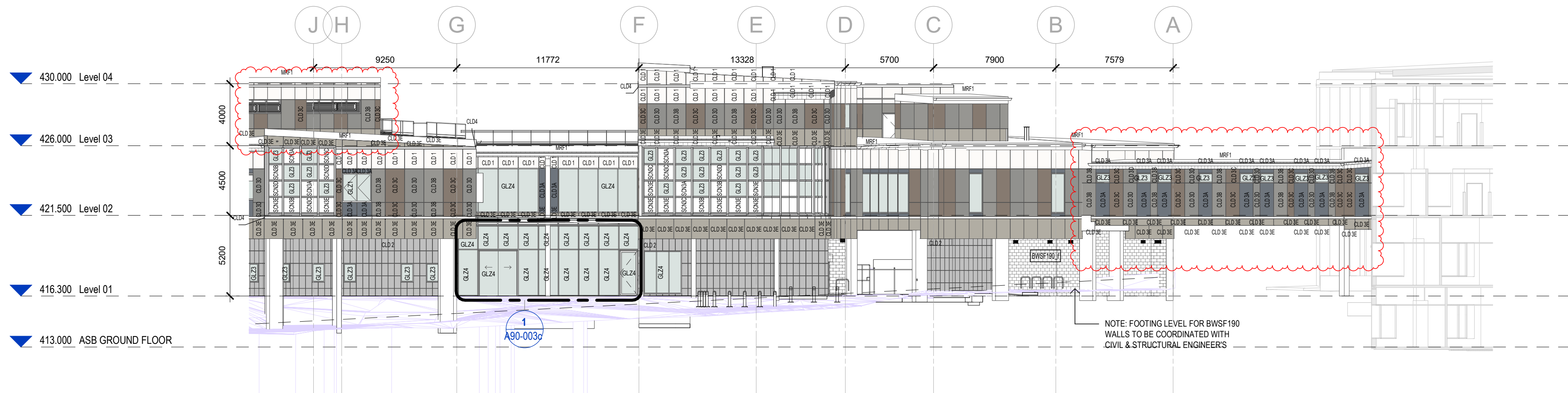
1 WEST ELEVATION - 01
SCALE: 1 : 200



2 SOUTH ELEVATION - 04
SCALE: 1 : 200

HANSEN YUNCKEN
DOCUMENT REVIEW
Tom Clark
8/07/2024

Provide unfolded facade
elevation set out drawings.



3 WEST ELEVATION - 03
SCALE: 1 : 200

 **Health Infrastructure**

DETERMINED – APPROVAL

REF Approval No: 09/2023/C

Date: 16/9/2024

Signed by: 

MATERIALS LEGEND

MTFL	METAL FLASHING, TRIMS AND CAPPING TO WALL CLADDING, ROOFS, FASCIAS TO MATCH ROOF FINISH - COLOUR SHALE GREY
CLD1	PROCLAD SOLID - COLOUR IN 'PURE WHITE' (TO BE CUT ACCORDING TO FACADE) 1250mm x TBAmmm TRIMMED AND SEALED-CORNERS FOLDED
CLD2	FRONTEK - ST182 (STONE TEXTURED) EXTRUDED PORCELAIN CLADDING TILES 405mm x 800mm
CLD3a	PROCLAD SOLID - COLOUR IN 'GREY METALLIC' (TO BE CUT ACCORDING TO FACADE) 1250mm x TBAmmm TRIMMED AND SEALED-CORNERS FOLDED
CLD3b	PROCLAD SOLID - COLOUR IN 'CHAMPAGNE METALLIC' (TO BE CUT ACCORDING TO FACADE) 1250mm x TBAmmm TRIMMED AND SEALED-CORNERS FOLDED

CLD3c	PROCLAD SOLID - COLOUR IN 'MEDIUM BRONZE METALLIC' (TO BE CUT ACCORDING TO FACADE) 1250mm x TBAmmm TRIMMED AND SEALED-CORNERS FOLDED
CLD3d	PROCLAD SOLID - COLOUR IN 'BRONZE METALLIC' (TO BE CUT ACCORDING TO FACADE) 1250mm x TBAmmm TRIMMED AND SEALED-CORNERS FOLDED
CLD3e	PROCLAD SOLID - COLOUR IN 'DUNE' (TO BE CUT ACCORDING TO FACADE) 1250mm x TBAmmm TRIMMED AND SEALED-CORNERS FOLDED
SCNXX	SCNXX (XX- RELATES TO CLD MATCH) LOCKER GROUP APOLLO 300 - ASSORTED COLOURS (TO MATCH PROCLAD COLOUR PALETTE) FINISH PERFORATED POWDERCOATED METAL PANEL LOCATION: COURTYARDS AND LEVEL 02 MAIN ENTRY

CLDEX1	PROCLAD SOLID - COLOUR IN 'SOUTH AFRICAN TEAK' LINK BRIDGE TO MATCH EXISTING FACADE PANEL (TO BE CUT ACCORDING TO FACADE) 1250mm x TBAmmm TRIMMED AND SEALED-CORNERS FOLDED
CLD4	3mm SOLID ALUMINIUM TRIM TO MATCH EXISTING ASB REFER TO WALL SECTIONS FOR SIZE
BWSF190	PEARL GREY ARCHITEC SPLIT AUSTRAL MASONRY SPLIT FACE CONCRETE BLOCK - REFER STRUCTURAL ENGINEER'S DOCUMENTS FOR REINFORCEMENT
MRF1	METAL DECK ROOF IN LYSAGHT KLIPLOCK 700 HIGH STRENGTH PROFILE - COLOUR IN SHALE GREY RAINWATER GOODS FINISH IN COLORBOND BASALT - 300mm HALF ROUND GUTTER AND 150mm DIA DOWN PIPES

NOTE:
BEDROOM AND SOME OTHER WINDOWS REQUIRE VISIBLE GLASS IN THE HD JOCKEY SASH TO BE 10% ROOM AREA.
1. EQUATES FOR 15M2 BEDROOM TO 1.5M2 OF JOCKEY SASH (JS) GLASS, WITH JS NOM 100MM FRAME + PRIMARY WINDOW FRAME IS APPROX 2.4M2 WINDOW INCLUDING FRAME.
2. EQUATES FOR 19M2 SPECIAL BEDROOM TO 1.9M2 VISION GLAZING AND 2.85M2 WINDOW INCLUDING FRAME.
3. OTHER ROOMS - SIZES TO BE CONFIRMED

GLZ1	DOUBLE-GLAZED UNIT (8mm CLEAR HEAT STRENGTHENED +12mm AIR SPACE + 11.52mm CLEAR LAMINATED HEAT STRENGTHENED) COUPLED WITH A JOCKEY SASH JOCKEY SASH FRAME TO BE HEAVY DUTY GAUGE/SECTION TO TAKE GLASS THICKNESS FOR CONSUMER AREAS HINGED WINDOW COMPRISING OF 12mm CLEAR TOUGHENED LAMINATED VIRIDIAN ASSUALT GUARD ULTRA GLAZING. BOTTOM HALF OF SURFACE 4 OF DOUBLE-GLAZED UNITS TO ALL BEDROOMS TO ENCORPORATE A CERAMIC FRIT/ FILM
GLZ2	DOUBLE-GLAZED UNIT (8mm CLEAR HEAT STRENGTHENED +12mm AIR SPACE + 11.52mm CLEAR LAMINATED HEAT STRENGTHENED)
GLZ3	VIRIDIAN ASSUALT GUARD ULTRA COMPRISING OF 12mm CLEAR LAMINATED HEAT STRENGTHENED GLAZING.
GLZ4	DOUBLE-GLAZED UNIT COMPRISING OF TINTED 8mm CLEAR HEAT STRENGTHENED +12mm AIR SPACE + 12mm VIRIDIAN ASSUALT GUARD ULTRA LAMINATED HEAT STRENGTHENED GLAZING. BOTTOM HALF OF SURFACE 3 OF GLAZING UNIT TO ENCORPORATE A CERAMIC FRIT/ FILM
GLZ5	13.52mm CLEAR LAMINATED GLASS H/S TO AS 1288
GLZ6	COLOURBACK GLASS

NOTE: Glass external and internal reflectance shall be minimised where possible, with external reflectance not exceeding 15%. Bedroom glazing with ceramic frit will comply with the requirements of ASTM C1379, ASTM C1048 and ASTM D2244, and shall not fade, chalk or show any other form of deterioration for the duration of the design life. All glazing to assume Low-E coating and have a thermally broken frame as per facade engineer and JV3 Sustainability requirements and specification.

REV	DESCRIPTION	DRN	DATE
A	REF - DRAFT ISSUE	DP	04/11/2022
B	REF - DRAFT ISSUE 2	DP	11/11/2022
C	ISSUED FOR COORDINATION	DP	18/11/2022
D	ISSUED FOR COORDINATION/PRICING	DP	01/12/2022
E	REF ISSUE	DP	02/12/2022
F	SD REPORT ISSUE	DP	16/12/2022
G	REF ISSUE	DP	20/12/2022
H	REF ISSUE	DP	10/02/2023
J	DRAFT ISSUE FOR REVIEW/COORDINATION	DP	24/02/2023
K	DRAFT DOI ISSUED FOR COORDINATION	DP	21/04/2023
L	ISSUE FOR TENDER	DP	05/05/2023
M	TENDER ADDENDUM	DP	26/06/2023
N	REF ISSUE	DP	06/07/2023
P	ENDORSED COMMENTS ACTIONED	DP	16/02/2024
Q	ISSUE FOR CC	DP	11/04/2024
R	ISSUE FOR CC2 REVIEW	DP	29/04/2024
S	ISSUE FOR CC2 REVIEW	DP	05/07/2024

COPYRIGHT
ALL RIGHTS RESERVED. THIS WORK IS COPYRIGHT AND CANNOT BE REPRODUCED OR COPIED IN ANY FORM OR BY ANY MEANS (GRAPHIC, ELECTRONIC OR MECHANICAL INCLUDING PHOTOCOPYING) WITHOUT THE WRITTEN PERMISSION OF THE PRINCIPAL UNDER THE TERMS OF THE CONTRACT. ANY LICENCE, EXPRESS OR IMPLIED, TO USE THE DOCUMENT FOR ANY PURPOSE WHATSOEVER IS RESTRICTED TO THE TERMS OF THE AGREEMENT OR IMPLIED AGREEMENT WITH THE PRINCIPAL UNDER THE TERMS OF THE CONTRACT.

DIMENSIONS
USE FIGURED DIMENSIONS, DO NOT SCALE. CONTRACTORS MUST VERIFY ALL DIMENSIONS ON THE SITE BEFORE COMMENCING ANY WORK OR MAKING ANY SHOP DRAWING WHICH MUST BE SUBMITTED AND REVIEWED BEFORE MANUFACTURE.

FIXTURES, FITTINGS & EQUIPMENT SPECIFICATIONS
SUBSTITUTE FF&E EQUIPMENT SPECIFICATIONS
THE FIT-OUT DESIGN AND DOCUMENTATION HAS BEEN COMPLETED ON THE BASIS OF FF&E AND EQUIPMENT ADVISED TO THIS OFFICE AT THE TIME OF BRIEFING THE DESIGN. THE DESIGN PROVISIONS FOR FF&E AND EQUIPMENT INCORPORATES SPATIAL ALLOCATIONS, SERVICING, LOADING AND ACCESS CLEARANCES AND WHERE APPROPRIATE SERVICES REQUIREMENTS, HAVING DUE REGARD FOR SURROUNDING FIXTURES AND FITTINGS. IT SHOULD BE NOTED THAT SUBSTITUTE FF&E OR EQUIPMENT WITH ALTERNATE SPECIFICATIONS SHOULD NOT BE PROCURED PRIOR TO VALIDATING THOSE SPECIFICATIONS AGAINST THE ITEM CONTROL, SCHEDULE AND DESIGN PROVISIONS IN THE MODEL. THIS OFFICE ACCEPTS NO RESPONSIBILITY FOR THE PROCUREMENT OF SUBSTITUTE FF&E AND EQUIPMENT WHICH HAS NOT BEEN REVIEWED AND VALIDATED AGAINST THE ORIGINAL DESIGN PROVISIONS.

SERVICE POINTS DISCLAIMER
THE SERVICE POINTS IDENTIFIED ON THESE DRAWINGS HAVE BEEN OVERLAYED FROM THE BUILDING SERVICES ENGINEERING MODEL. AND ARE PROVIDED FOR INFORMATION AND SET-OUT PURPOSES ONLY. WE HAVE BEEN ADVISED BY THE SERVICES ENGINEERS THAT THE POINTS REPRESENTED ON THESE DRAWINGS ARE CORRECT AT THE TIME OF PUBLICATION. THIS OFFICE DOES NOT WARRANT THE ACCURACY OF THIS DATA. REFER TO THE BUILDING SERVICES ENGINEERING DOCUMENTATION FOR THE INSTALLATION OF THE SERVICES POINTS, AND THE INTERFACE BETWEEN THE SERVICES POINTS AND THE RESPECTIVE ENGINEERING SYSTEMS.


ISSUED FOR CERTIFICATION

ARCHITECTS



ABN: 21 134 476 065
PELAO COMPLEX BUILDING 3, LEVEL 2
21-31 GOODWOOD ST, RICHMOND VIC 3121, AUSTRALIA
PH: (03) 9885 2333
THIS ARCHITECTURAL DESIGN IS THE COPYRIGHT OF
SILVER THOMAS HANLEY (AUS) PTY LTD ABN 21 134 476 065
AND SHALL NOT BE REPRODUCED WITHOUT THEIR WRITTEN PERMISSION
CLIENT

Hunter New England Local Health District

 **Health Infrastructure**

PROJECT

TAMWORTH MENTAL HEALTH UNIT

Dean Street Tamworth NSW

DRAWING TITLE

BUILDING ELEVATIONS

SCALE DATE DRAWN BY CHECKED
As indicated@A1 09/15/22 AB DP

PROJECT No DRAWING No REVISION

10500.1 A50-002

S